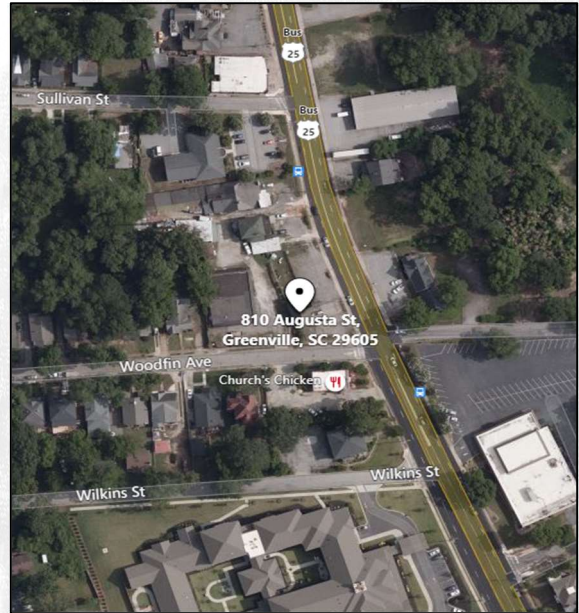
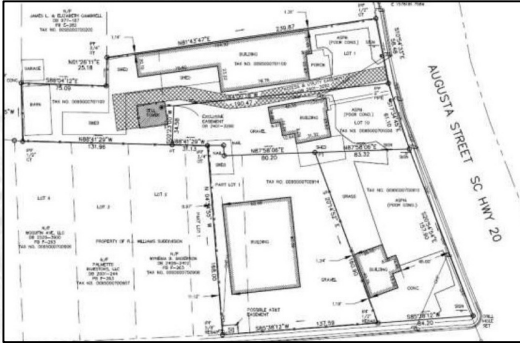


**FOR LEASE  
Or SALE**



**CARDINAL**  
COMMERCIAL PROPERTIES™



## 810 Augusta St. Greenville, SC 29605

ACRE: 1.371+/-  
COUNTY: GREENVILLE  
(City of Greenville)  
LEASE RATE: Negotiable  
LEASE TYPE: NNN  
SALES PRICE: Negotiable

- Excellent redevelopment site available for Ground Lease, Build-To-Suit, or Sale.
- Located along Augusta St. with proximity to Greenville's vibrant West End Historic District.
- Zoned MX-2 by the City of Greenville.
- 277'+/- of frontage along Augusta St.
- Located at the intersection of Augusta St. @ Woodfin Ave with access from both roads.
- Great location for office, retail, or mixed-use development.
- 1.371+/- total acres.

**FOR MORE  
INFORMATION  
CONTACT**

**Robert Brissie, CCIM  
Broker-in-Charge  
864-559-8227**

**[rob@cardinalcommercialproperties.net](mailto:rob@cardinalcommercialproperties.net)**

**CardinalCommercialProperties.net**

Information contained in this marketing brochure has been obtained from sources that are deemed reliable. We have no reason to doubt the accuracy contained herein but do not guarantee it. All information should be verified prior to purchase or lease. All properties are subject to change or withdrawal without prior notice.

